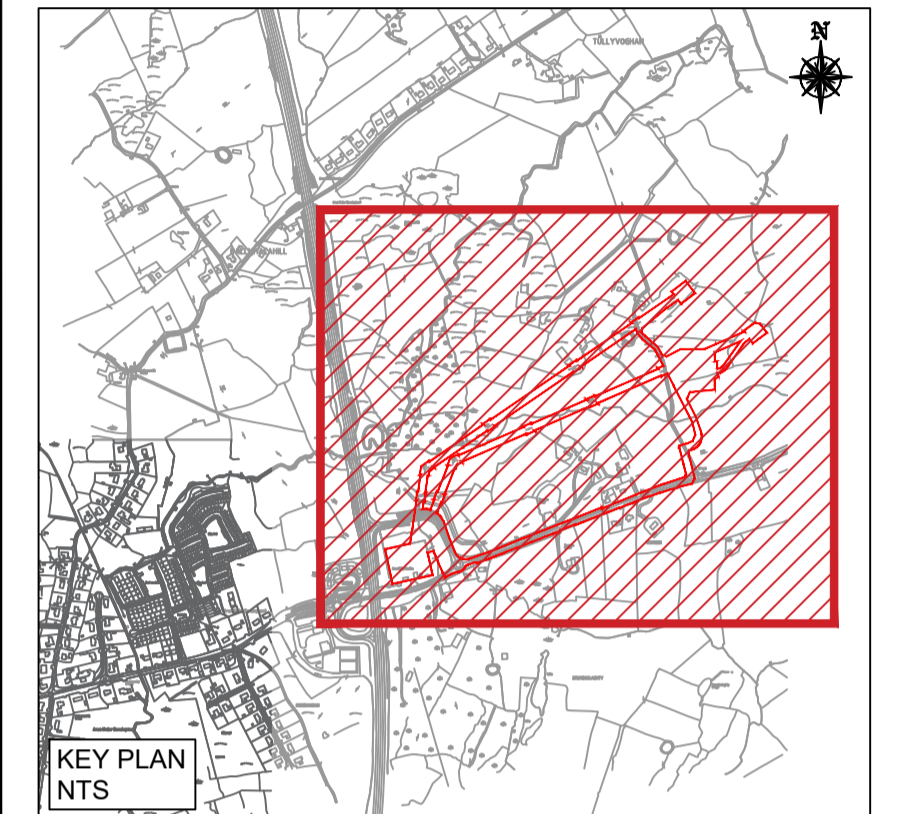


ART DATA CENTRES



LEGEND:

- SITE BOUNDARY ———
- EXISTING HV OVER HEAD LINE - - - - -
- CLEARANCE ZONE FROM EX. OH LINE - · - · -
- PROPOSED BUILDING DEVELOPMENT
- DEVELOPMENT TO ONLY COMMENCE ONCE EXISTING OH LINES HAVE BEEN REMOVED
- PROPOSED NATIVE WOODLAND PLANTING TO BE RESTRICTED TO 3m HIGH (MATURED)

OS MAP REF. NO. 4265, 4265-A, 4265-C

Rev	Description	PS	RG	Date
P01	PLANNING			03/06/22

Clifton Scannell Emerson Associates Limited
Consulting Engineers,
3rd Floor, The Highgate,
Bakers Point, Pottery Road,
Dun Laoghaire, Co. Dublin,
Ireland, A96 KW29

T: +353 1 288 5006
F: +353 1 283 3466
E: info@csea.ie
W: www.csea.ie

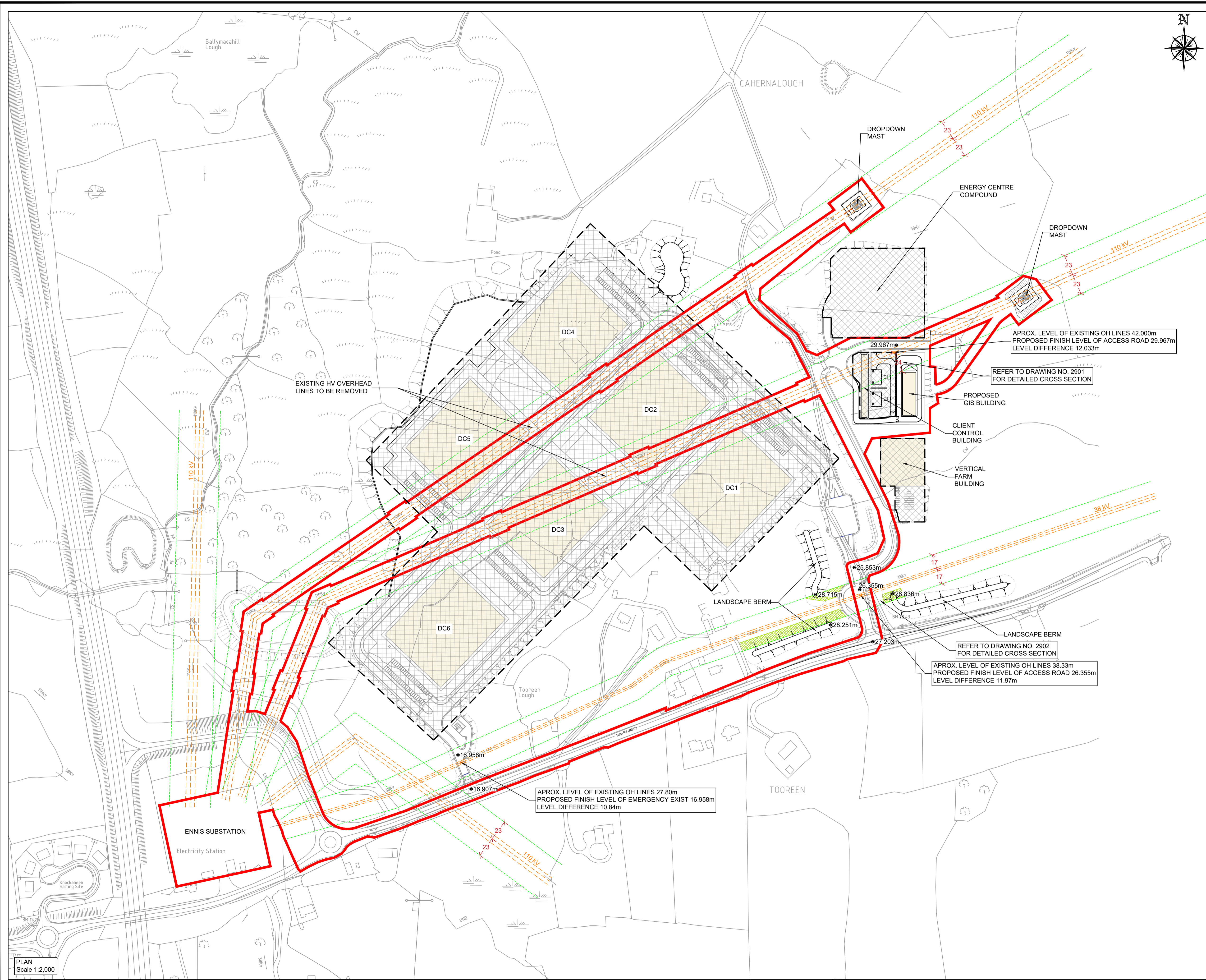
Client: ART DATA CENTRES
Project: ART DATA CENTRES ENNIS CAMPUS - 110KV GIS SUBSTATION
Dwg. Title: EXISTING OVERHEAD LINES OVERALL

Drawn By: PS Checked By: RG Date: JUN 2022

Project Code: Originator: Zone/Phase: Level: Type: Role: Dwg. No.:
20_110A - CSE - GEN - XX - DR - C - 2900

S2 PLANNING 1:2000
Status Code Suitability Description Scale At A1

P01 PLANNING 20_110A
Revision Project Status CSEA Job No.



PLAN Scale 1:2,000